

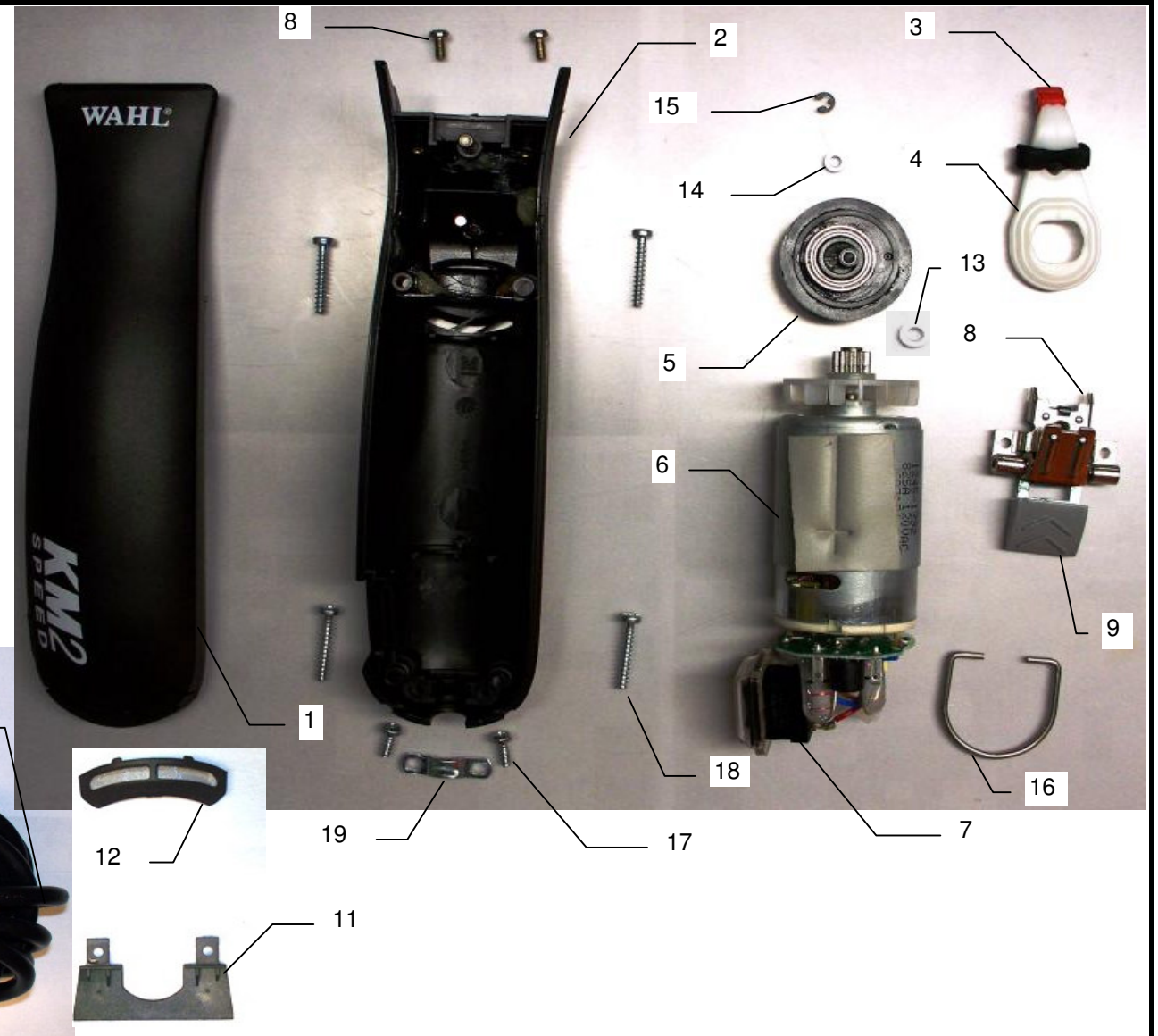
WAHL CLIPPER CORP.

STERLING, ILLINOIS

TITLE: KM2		NO. 9757-200, -300, -500, -2001		
NO.	REVISIONS	BY	DATE	APPROVED

DRAWN DJS	DATE	WAHL ENGINEERING APPROVAL	DATE
DRAFT 1	DATE	Wahl Quality Approval	DATE
SHEET 1 Of 3	DATE	Wahl Service Center Approval	DATE

ITEM NO.	DESCRIPTION
1	41247-7020 MSC Top Housing w/air filter
2	41247-7100 MSC Bottom Housing
3	41291-7050 MSC 2 Replacement Drive Tip
4	41245-7140 MSC Drive lever, red tip, blk sponge KM-2
5	41247-7920 MSC Toothed Wheel Comp.
6	41247-7040 MSC Motor
7	41247-7050 MSC Circuit Board w/Switch
8	41247-7910 MSC Blade Set Retainer w/Screws (Hinge)
9	41247-7890 MSC Release Button (latch)
10	41247-7090 MSC Cord 120v KM-2
11	95411 MSC Rubber Hair Seal KM-2
12	41245-7905 MSC Filter
13	41247-7925 MSC Washer Top
14	41247-7930 MSC Washer Bottom
15	41247-7935 MSC Washer KM-2
16	41245-7915 MSC Hanging Ring
17	41247-7940 MSC Cord Flexing Screw KM-2
18	41247-7945 MSC Case screw KM-2
19	41400-7945 MSC Cable Clamp KM-2



Specifications

1. Tune Voltage..... 126 Volts 60 Hz
2. Blade Speed..... Approximatley 2,700 Low 3,300 High Cutting Strokes Per Minute
3. Cutting..... Must cut Wahl certified media
4. Cutting System..... Comb: High grade steel Per Wahl Bill Of Material
Cutter: High grade steel Per Wahl Bill Of Material
5. Cord..... Polarized Round Professional
6. Drive..... Vibrator Motor
7. Switch Function..... Toggle ON/OFF/ON
8. Noise Level..... Less than 70 db
9. Housing material..... Base: Per Wahl Bill of Material
Lid: Per Wahl Bill Of Material
10. Clipper Approvals..... UL

WAHL CLIPPER CORP.

STERLING, ILLINOIS

TITLE:

NO.

Appearance

1. No rust on any exposed metal surfaces like: blades or screws.
2. All visible surfaces, logo must be free of pits, chips, cracks, scratches, sink marks, flash, color deviations, and imperfections.
3. Must be free of dirt, debris, and offensive odor: Clipper, packaging and all accessories.
4. Excess oil should be wiped off of the clipper.
5. Logo and artwork to be legible.
6. Cord wire tie should be secured around cord and not fall off or allow cord hank to fall apart.

Construction

1. All screws must be tight and not stripped.
2. Clipper to have the following approvals:
UL
3. Drop test: Drop unit from 3ft. Onto hardwood surface in 3 different orientations. There must be no exposed live parts.

Performance (At Proper Voltage and Frequency)

1. Clipper must be in tune in accordance with procedure on sheet #4.
2. ###
3. ###
4. ###
5. Noise level must be Less than 70 db
6. Clipper must be able to cut Wahl certified media.

Quality Assurance

1. After being approved, no further changes in material, packaging, design or performance may be made without written permission from WAHL CLIPPER CORPORATION.