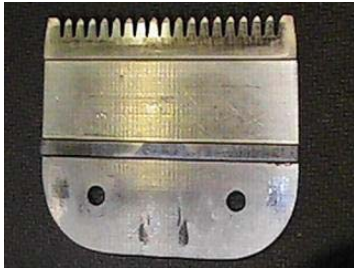


Observations of the Oster & Andis 8 1/2 Blade

Northern Tails Sharpening, 251-232-5353, www.northerntails.com



The cutting surface of the Oster 8 1/5 blade has longer teeth letting more hair into the comb for cutting. On this particular blade it will be easier to push through most types of coat because of the depth of the comb teeth.



The back of the Oster 8 1/5 blade has extremely long comb teeth, and can guide even the most difficult hair into the blade for cutting.



The cutting surface of the Andis 8 1/2 blade has very short comb teeth. This style does not let the many types of coat enter the blade very well. In my experience, Cockers, Chows, Cats, Schouzers, some Poodles, the blade seems to drag somewhat and pushing the clippers makes it more difficult.



The back of the Andis 8 1/5 blade has seemingly long comb teeth, but they are not recessed enough to the cutting surface to cut difficult coat. See picture above again, short stubby teeth.



When the cutter is placed back on the Andis 8 1/2 blade correctly, only the tips of the cutter do any cutting. Hair can bunch up at the front of the blade because the cutter isn't cutting it fast enough with just the tips of the cutter, so the blade drags in some coats. The cutter should slice the hair not rip at it. When the blade heats up that cutter may move because of metal expansion. If it goes forward it may cut skin, if it backs up it will stop cutting altogether.

These observations come from my personal experience using both these blades on several types of coat. If you use either one of these blades and are satisfied with the performance, then keep using it and replacing it with the same.